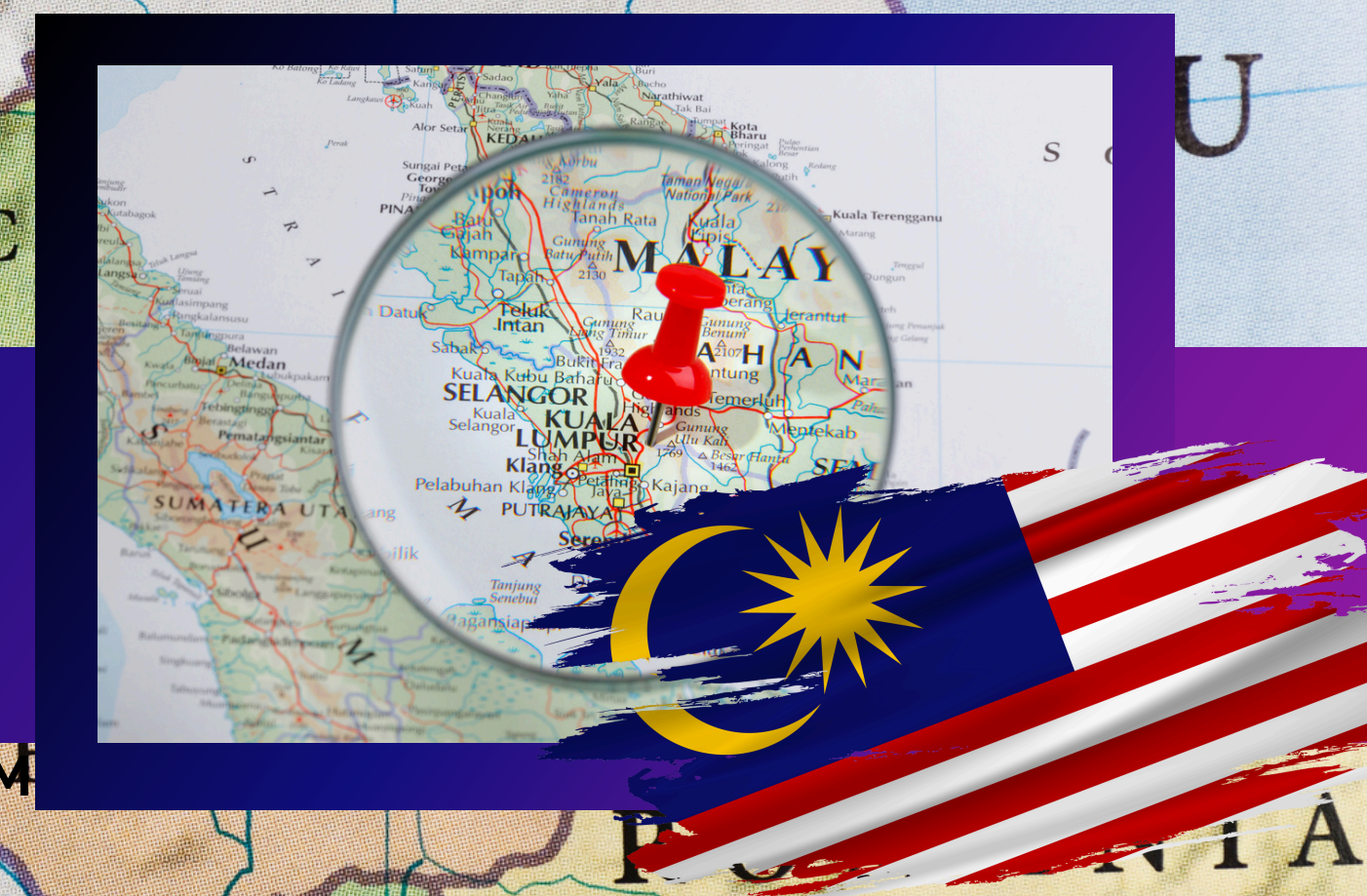




FROM MALAYSIA TO EUROPE

WWW.PICASYNERGY.COM



WWW.PICASYNERGY.COM
HOLDINGS (M) SDN BHD

PICASYNERGY GROUP OF COMPANIES



 Company Name PICASYNERGY HOLDINGS (M) SDN BHD

 Co. Registration No. 1342564-W



Jaya One Unit 005, Level 5
Block J, 129 Offices, The School,
72A, Jalan Professor DiRaja Ungku
Aziz, 46200 Petaling Jaya

L2-19, Level 2,
Shaftsbury Putrajaya,
Jalan Alamanda, Presint 1
62000 W.P. Putrajaya



Center of Excellence (COE):
LADANG GAMBANG, KM30,
Lebuhraya Tun Abdul Razak,
26300 Gambang, Pahang,
MALAYSIA.

PASSIONATE PROFESSIONALS AT YOUR SERVICE

KEY PERSONNEL

SYED MOHAMED FAUZI BIN
SYED MURSHAD
FIELD ADVISOR | GROUP CEO



SYED MOHAMMAD HYEKAL BIN MARSADH
EXECUTIVE DIRECTOR



MOHD SHUKRI BIN YAHYA
MANAGING DIRECTOR



HASLINDA BINTI MOHD EUNOS
VICE PRESIDENT OF INTERNATIONAL TRADE



ROBERT CHEONG
VICE PRESIDENT OF COMPLIANCE

ADVISORY BOARD



DATO' IR. HAJI ROSMAN BIN RIDZWAN
CHAIRMAN



DATUK SERI MOHD SALLEHUDDIN
BIN HASSAN
BOARD MEMBER



HJ. ABD RAHMAN BIN ABDULLAH THANI
FINANCIAL ADVISOR

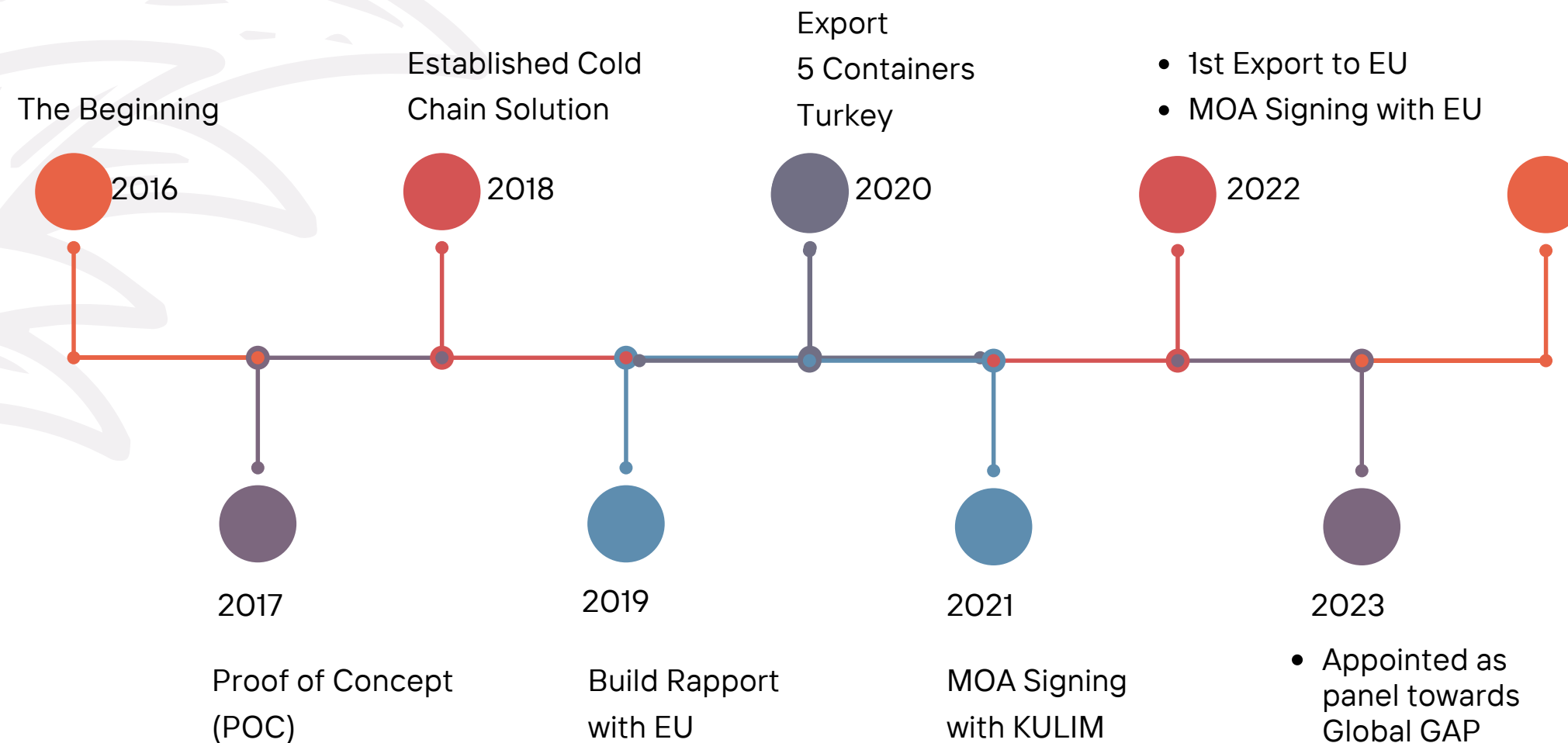


PICASYNERGY

THE MILESTONE JOURNEY OF PICASYNERGY FROM FARM TO EUROPE



- 2016 Attend Courses and Trainings on MD2 Pineapple
- 2017 MD2 Pineapples Commence Planting - First Proof of Concept (POC)
- 2018 Established Cold Chain Solution & Cold Treatment Technology
Awarded Islamic Entrepreneurship Development Award by OIC
- 2019 Build Rapport with the European Supermarket Chains. Appointed Malaysia's Sole Distributor by Decco.Italia
- 2020 Export 5 containers of MD2 pineapples to Turkey (during COVID-19 national lockdown)
- 2021 MOA signing with KULIM (M) Berhad. Facilitate Kulim (M) Berhad to obtain necessary certifications required to enter European market (Germany, Netherlands, UK, France, Italy). European supermarket chains visit to Malaysia
- 2022 MOU signing with European supermarket chains
1st Entrê EXPORT to EUROPE (17th December, 2022) with the following government agencies :
Ministry of Agriculture and Food Security (MAFS), MPIB, MARDI, MATRADE, Consulate General of Malaysia, Frankfurt; Embassy of Malaysia, The Hague (Netherlands) & Yayasan Pahang.
MOU signing with PS Poly Sdn Bhd for downstream products.
MOA signing with European Supermarket Chains.
- 2023 Appointed by MPIB as Global GAP certifications facilitator.
- 2024 Projection for EXPORT of MD2 Pineapples to EUROPE by Yayasan Pahang.
Completion of Total Supply Chain - "Market-Ready Produce, IoT - Enabled"



- 2024**
- Projection to export to EU by Yayasan Pahang
 - To complete the Total Supply Chain - Market-Ready Producer!
 - Collab with new partners e.g.
 - Taman Kekal Pengeluaran Makanan Johor, Jabatan Pertanian Johor dan berikut :





STRATEGIC BUSINESS UNIT

1



- MD2 Pineapple Specialist Consultancy - includes :-
 - Farm Management
 - Advice on Machineries
 - Advice on System
 - Provide end to end solutions (from consultancy to product manufacturing)



STRATEGIC BUSINESS UNIT

2



- Supply MD2 Pineapple Seeds.

STRATEGIC BUSINESS UNIT

3



- Sole Distributorship of Decco Products in Malaysia

STRATEGIC BUSINESS UNIT

4



- Buy-Back MD2 Pineapples to EU market
- Trading - Export & Import End Products

STRATEGIC BUSINESS UNIT

5



- Training & Consultancy
 - GLOBAL G.A.P,
 - BRCGS &
 - RAINFOREST ALLIANCE
- We facilitate local growers to obtain GLOBAL GAP, BRCGS; and Rainforest Alliance certifications.

STRATEGIC BUSINESS UNIT

6



- Internet of Things & Digital Solutions.

BRIDGING THE GAP

FROM FARM TO THE WORLD

COLLECTION |
PACKAGING &
PROCESSING |
MARKETING & SALES
CENTRE

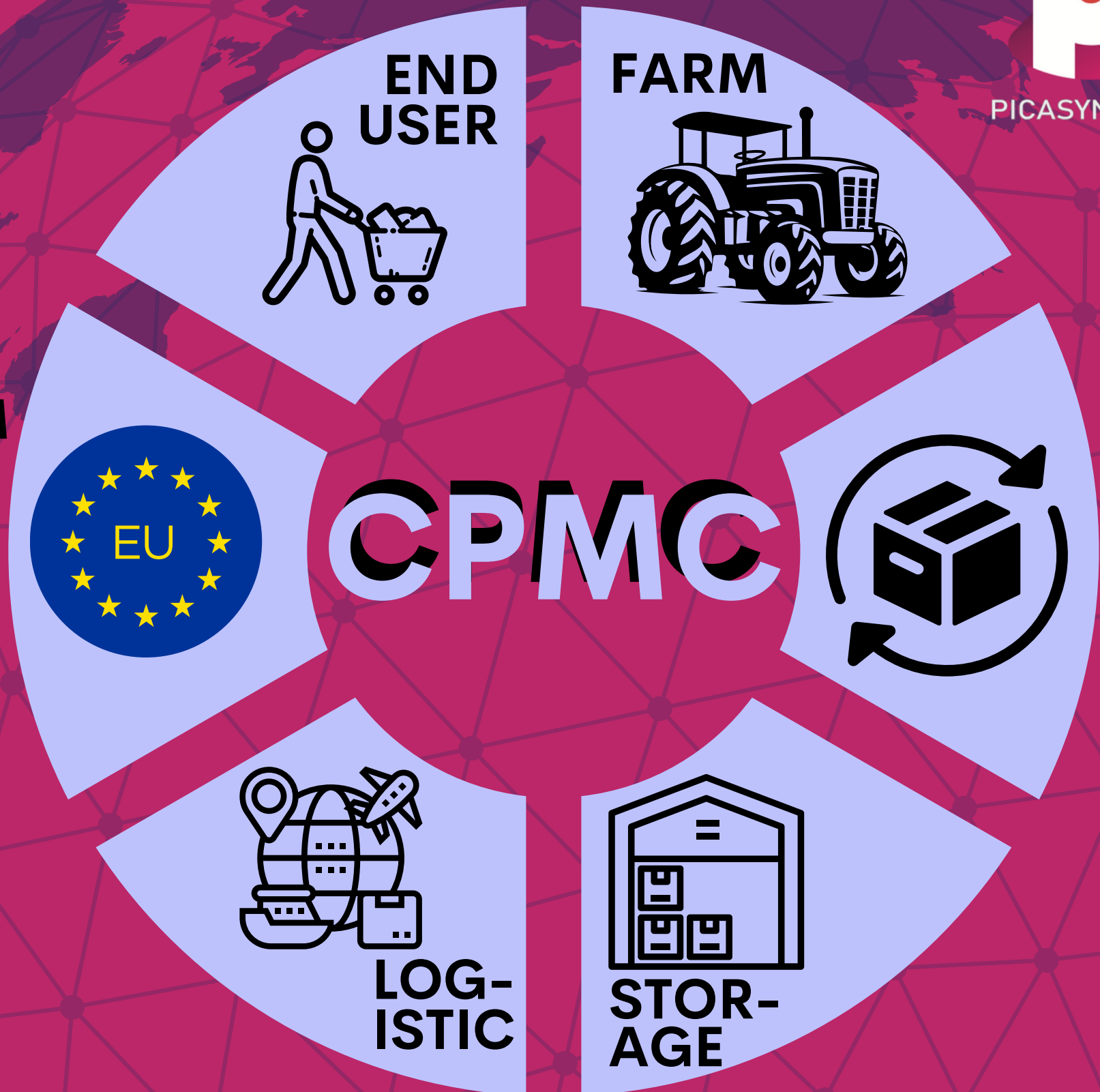
Picasynergy grows and sources fruit from across the globe to supply year-round, in-season, fresh quality produce.

Our growers are accredited by GLOBAL G.A.P., the world's foremost authority in agricultural practices. To ensure the utmost in food safety and quality, we also adhere to BRCGS (British Retail Consortium Global Standards) certification. Moreover, we are dedicated to environmental conservation and ethical labor practices, exemplified by our Rainforest Alliance certification.

These certifications demonstrate our unwavering dedication to safe, sustainable, and responsible agricultural production. We prioritize food safety, traceability, environmental sustainability, and worker welfare, making us a trusted and reliable supplier in the industry. Our multi-certification approach reflects our comprehensive approach to addressing the diverse needs of our customers and partners, ensuring that our products meet the highest standards of quality, integrity, and sustainability.



EM
U
A
R
R
O
K
P
E
T

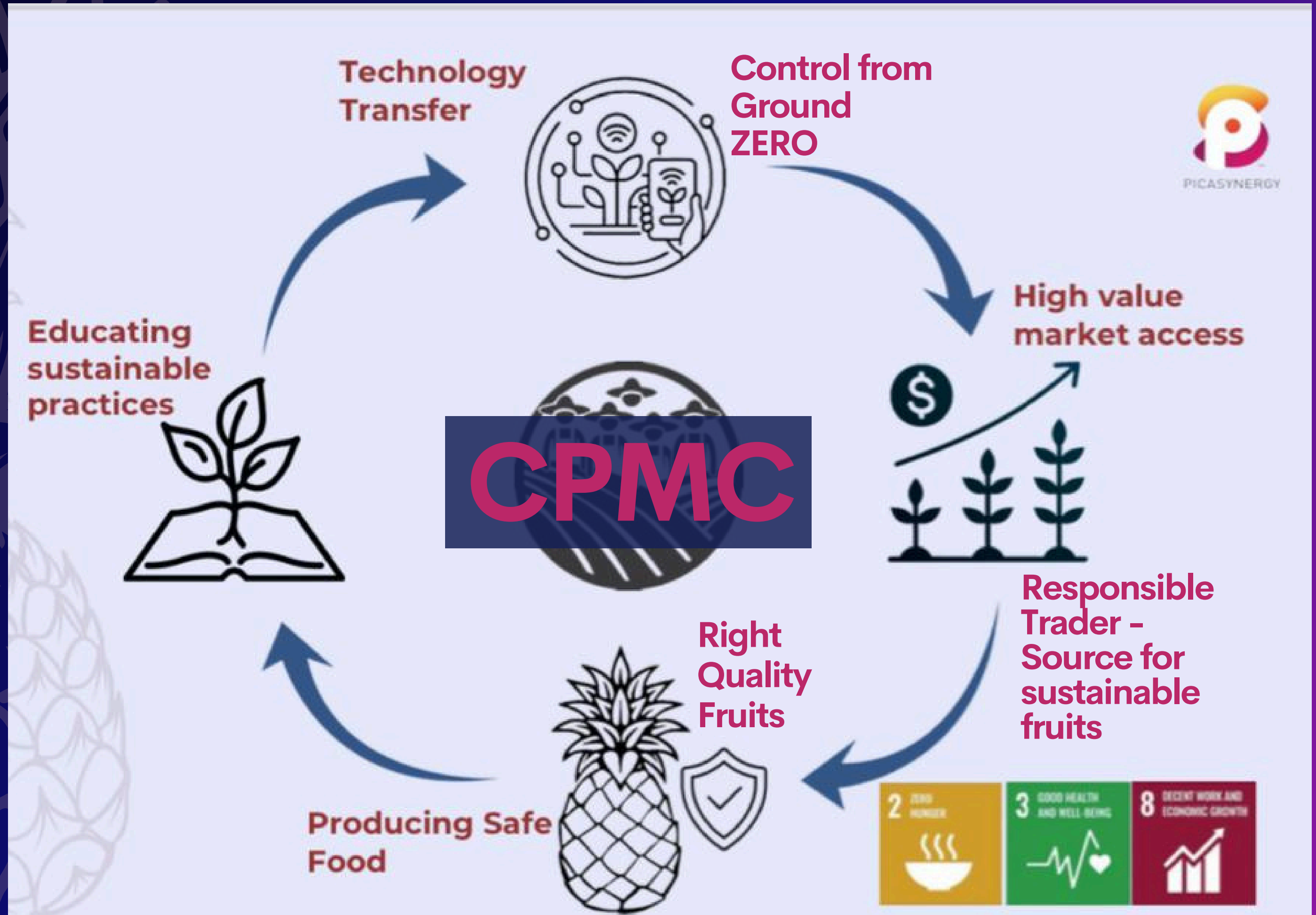


P
A
C
K
A
G
I
N
G

OUR aspiration will also be supporting the Malaysian Government commitments towards the United Nation Sustainable Development Goal (UNSDG). Our involvement will be assisting the nation towards UNSDG 2, 3 and 8

Picasynergy approach on Corporate Social Responsibilities is one-of-its-only-kind. Our contribution back to the societal is by the way of human capital development. We ensure the medium and small growers have access to a fair market and to build future generation interest is high-technology farming. We applied a holistic and systematic multi-approach to ensure our farming and agriculture partners are on this same impactful journey with us.

Corporate Social Responsibility





CPMC COMPARTMENTS



SINGLE
BUSINESS
UNIT

1



Pineapple Specialist

**CPMC
COMPARTMENT**

SINGLE
BUSINESS
UNIT

2

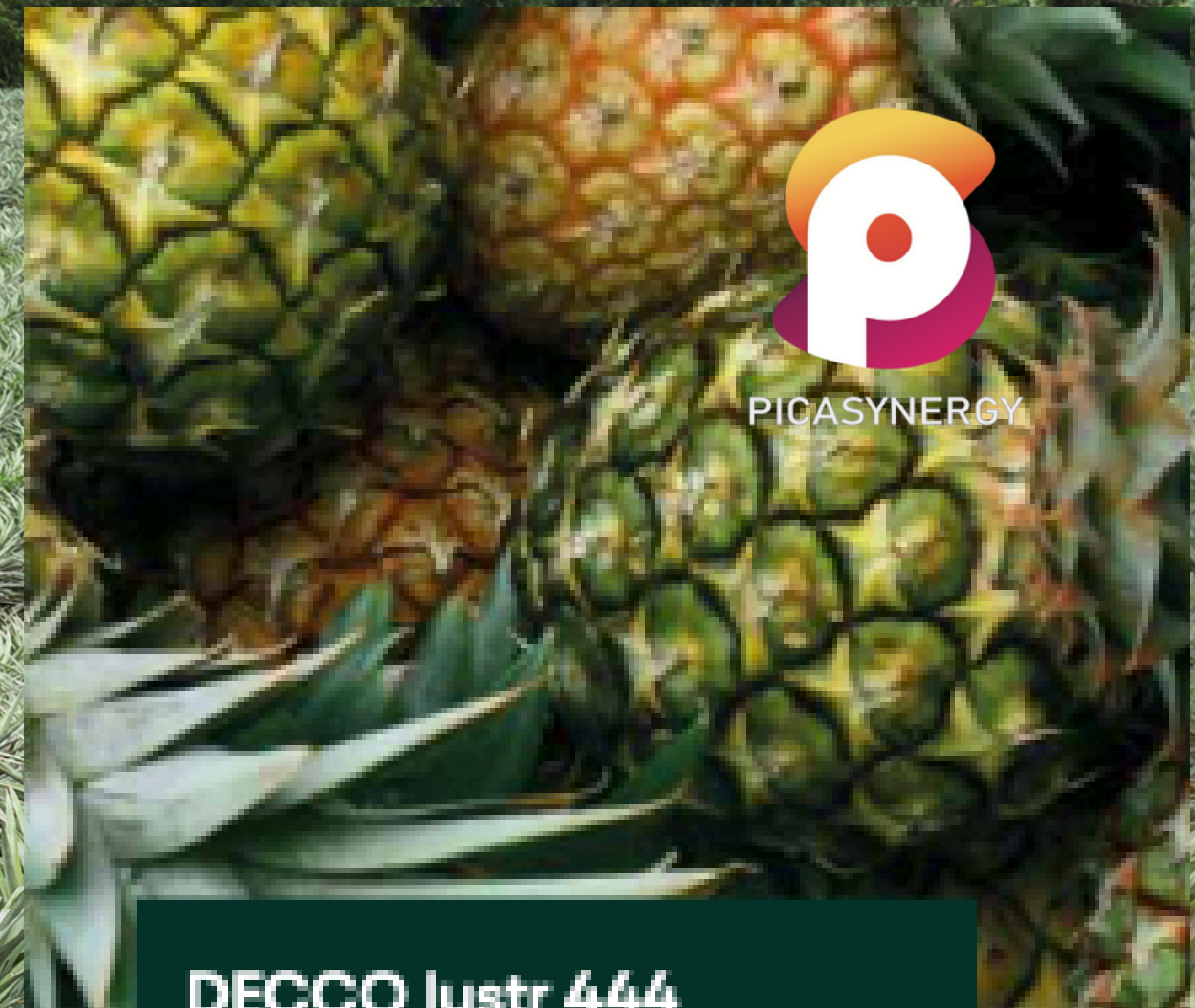


- Supply MD2 Pineapple Seeds.



SPECIALIST END-TO-END SOLUTION

- Planting in a planned and strategic manner to obtain results according to market requirements.
 - "Market-Ready Production"
 - Products that produce 'ZERO RESIDUE' & LONG LASTING.
- Careful planning and execution of Pre & Post Harvest.
- Organize information technology (IoT) systems and data.
- Using machine mechanisms to obtain data and improve efficiency.
- Supply the correct best seeds



DECCO lustr 444

Active ingredient:
(E905) Microcrystalline wax. Specially formulated for prevention of IBS.

DECCO lustr 445 NEW

Active ingredient:
(E905) Microcrystalline wax and food grade oils. Its formulation was made to have extra action in controlling weight loss and delay ripening.

DECCO lustr 446

Active ingredient:
(E473) Sucrose esters of fatty acids.





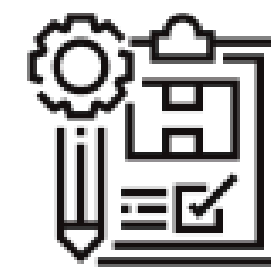
**CPMC
COMPARTMENT
- PACKAGING**

QUALITY CONTROL



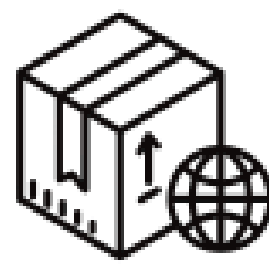
In addition, Picasynergy has pick a dedicated quality control team in Malaysia, which checks product quality on arrival

TRUSTWORTHY PACKHOUSE COMPANY



Quality Control from Producer to Consumer

To further the longevity of the produce, Picafruit has implemented proper cold chain management from farm to end-destination.



Distribution & Allocation

To ensure that produce is delivered according to the required grading, the quality control team inspects the product in the pack house – and again in port prior to shipping.



CPMC
COMPARTMENT
- STORAGE
- LOGISTICS

COLD STORAGE LAST MILE LOGISTICS

Inclusive lowers operating costs, reducing system downtime and interruptions, greater product longevity, improved data integrity and inventory management

Picasynergy (PSB) monitoring the transports produce phases which to maintain the freshness of the produce. The company utilizes state-of-the-art temperature-controlled storage facilities both at source and at end destination. We also insist on refrigerated transport from our warehouses to the end customer.

(PSB) utilises state-of-the-art temperature-controlled storage facilities, both at source and end-destination. Refrigerated trucks complete the cold supply chain from warehouse to consumer.

A world-class cold-room was built in Malaysia where repacking can take place. (PSB) is also in the process of purchasing a fleet of temperature controlled trucks to have better control over the cold chain process.



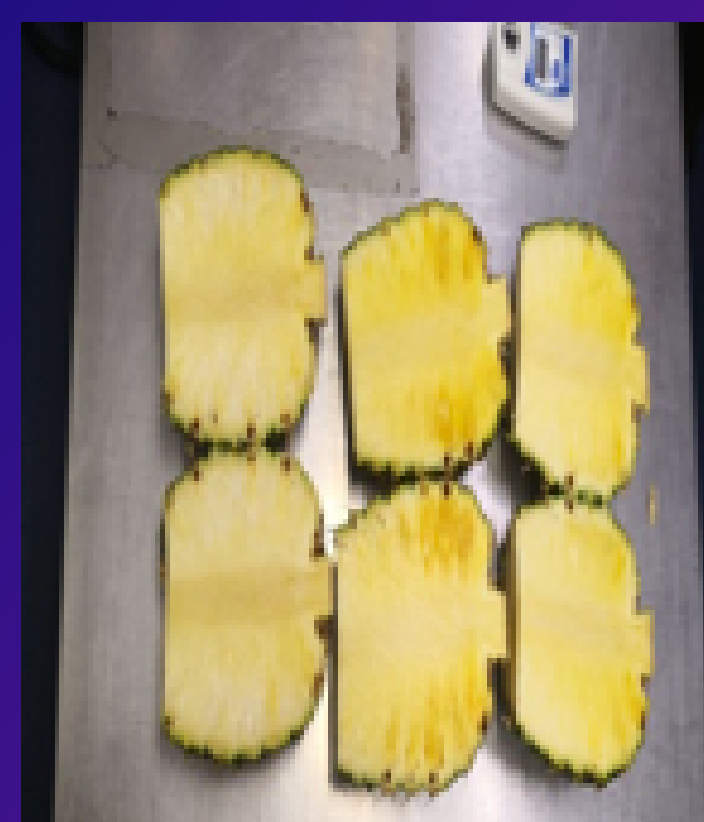


JOURNEY OF THE FIRST EXPORT TO EUROPE

BY  **PICASYNERGY**
HOLDINGS (M) SDN. BHD.



THE FIRST
EXPORT TO
EUROPE



THE
PREPARATIONS
KULIM (M) BERHAD



THE FIRST
EXPORT TO
EUROPE



THE
PREPARATIONS
KULIM (M) BERHAD



THE FIRST
EXPORT TO
EUROPE



THE
ARRIVAL



GOVERNMENT AGENCIES INVOLVED :

- Ministry of Agriculture and Food Security (Malaysia) (MAFS),
- Malaysia Pineapple Industrial Board (MPIB)
- MARDI
- MATRADE
- Consul General Malaysia, Frankfurt, German.
- Agricultural Atase Malaysia, The Hague, Netherlands.
- Yayasan Pahang.
- Kulim (M) Berhad



THE FIRST EXPORT TO EUROPE



Johor pineapples en route to Germany



By ZAZALI MUSA

METRO NEWS

Saturday, 24 Dec 2022



Zahari (centre) says the state government allocated RM9mil in 2021 to encourage farmers to grow MD2 pineapples. — Courtesy photo

THE ARTICLES

Source : Malay Mail - Publication dated 16 Dec, 2022

Source : Fresh Plaza.com - Publication dated 16 Dec, 2022



JOHOR will continue to develop pineapple farming to maintain the state's position as the main producer of the fruit in the country.

State agriculture, agro-based industry and rural development committee chairman Datuk Zahari Sarip said that Johor allocated RM9mil in 2021 to develop the farming of MD2 pineapples.

MD2 pineapples are one of the world's sweetest variants and is said to have a high vitamin C content.

The variety is easily identified by its bright gold skin and uniform size.

"We have about 10,212 hectares of area cultivated with pineapple as of last year.

"This accounted for 63% of pineapple farms in the country," said Zahari during his visit to Kulim Pineapple Farm in Ulu Tiram, Kota Tinggi.

Zahari said the RM9mil allocation was to encourage pineapple smallholders to venture into MD2 pineapple cultivation.

Source : Yahoo News - Publication dated 15 Dec, 2022



At the event, Zahari also witnessed the first shipment of MD2 pineapples from the Kulim Pineapple Farm to Germany.

He said the export to the country was made possible under a programme with the Malaysian Pineapple Industry Board, Malaysia Agriculture Research Development Institute, Agriculture Department, Federal Agriculture and Marketing Authority, state-linked company Kulim (M) Bhd and Picasynergy Holdings (M) Sdn Bhd.

"The German importer had visited Malaysia in July to sample the pineapples grown at the Ulu Tiram farm," added Zahari.

He said the first container containing 18,000kg had departed the Port of Tanjung Pelepas in Gelang Patah this month, bound for Rotterdam in Netherlands.

Zahari said the pineapples would then be transported by road to Cologne, Germany, with the entire journey taking between 25 and 30 days.

"Apart from Germany, Kulim also exports the MD2 variety to China, Japan, South Korea, Qatar and Turkiye," he said.

Source : The Star - Publication dated 24 Dec, 2022

REPORT BY THE KEY ASSISTANT, SENIOR DIRECTOR G52, DEPARTMENT OF AGRICULTURE PUAN ZAITI AKMAL BINTI DAHLAN

LAMPIRAN B (SBDPPK)



Antara Intipati Ucapan Duta Malaysia, Dato' Nadzirah Osman, adalah menyampaikan teknologi/ kaedah pembangunan pertanian di Eropah yang boleh digunakan di Malaysia sebagaimana di bawah:-

- i) Rotterdam, Netherlands merupakan pelabuhan yang terbesar di Eropah dan mempunyai prospek yang besar untuk menjadi laluan pasaran bagi produk pertanian dari Malaysia
- ii) Mencadangkan untuk Jabatan/Agensi mewujudkan 'One Stop Centre' untuk menyalurkan semua maklumat berkaitan keperluan pengimportan dan pengeksporan produk pertanian.
- iii) Mencadangkan untuk mewujudkan satu badan koperasi/ korporat yang mengumpulkan para petani dan memberi kemudahan/jalinan rangkaian pemasaran atau pengeksporan. Melalui platform ini, para petani boleh mengeksport hasil tanaman mereka dengan lebih mudah dan sistematik.
- iv) Melalui koperasi/badan koprat tersebut juga menyediakan:-
 - 'School for farmers' yang boleh memberi bimbingan dan menyampaikan teknologi pertanian supaya lebih efektif.
 - Menjalinkan rangkaian teknologi antara jabatan/ agensi dengan institusi pengajian tinggi.
 - Membangunkan usahawantani.
 - Melaksanakan 'Food Hub'
 - Membangunkan 'Land Bank'
- v) Mengharapkan akan ada tanaman hasil pertanian yang lain dapat memasuki pasaran Eropah selain Nanas.
- vi) Untuk masuk ke pasaran Eropah, Jabatan dan Agensi Kerajaan di Malaysia perlu memberi fokus kepada 'Food Security' dan memberi bimbingan kepada petani berkaitan persijilan **Global GAP, Rainforest Alliance, BRCGS Food and Safety dan BRCGS Agent and Broker.**

The following is one of the essences of the Speech of the Malaysian Ambassador :-

iii) Propose to create a cooperative body that brings together farmers and facilitates marketing or exporting networks.

iv) Through the cooperative, also provide:-

- 'School for Farmers' which provides guidance and conveys agricultural technology so that it is more effective.
- Establish technology networks between departments/agencies and higher education institutions.
- Developing entrepreneurship.
- Implement 'Food Hub'.
- Developing a 'Land Bank'.

v) Hoping that there will be other agricultural crops that can enter the European market besides Pineapple.

vi) To enter the European market, Government Departments and Agencies in Malaysia need to focus on 'Food Security' and provide guidance to farmers regarding Global GAP, Rainforest Alliance, BRCGS Food and Safety certification.

LAMPIRAN B (SBDPPK)

2. Kepentingan Kursus / Bengkel Kepada Pembangunan Organisasi :

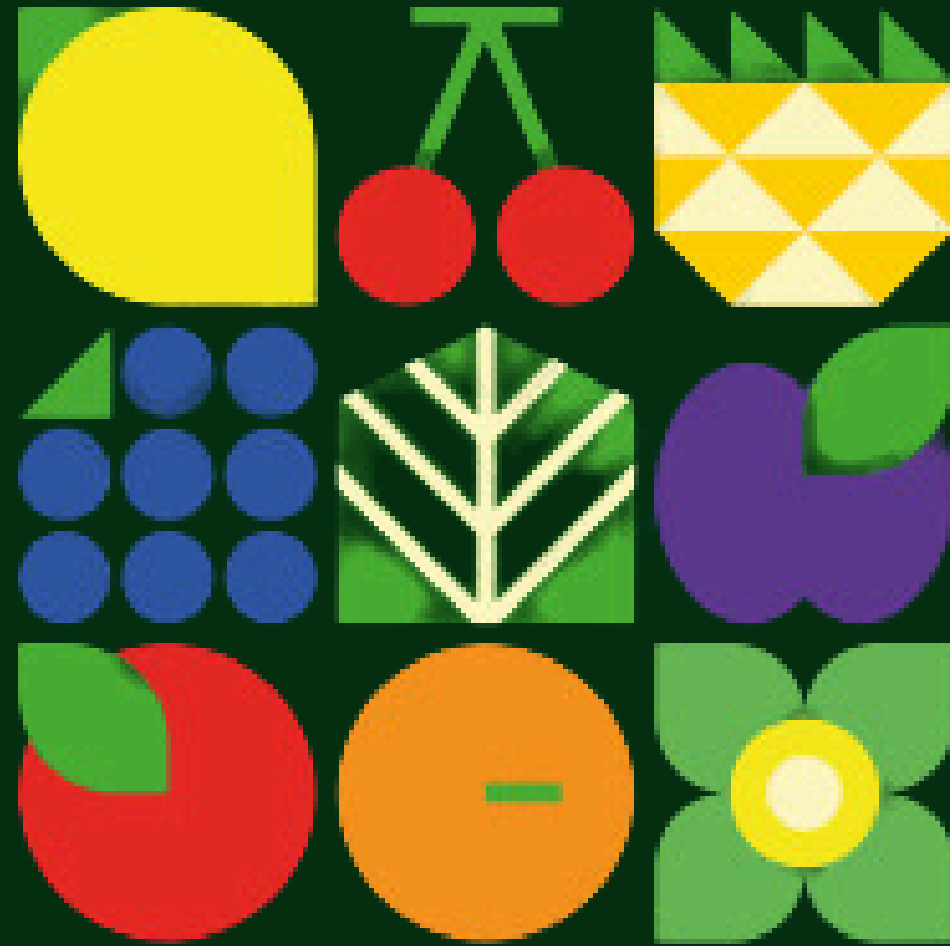
1. Percubaan Eksport Nanas ke Luar Negara ini sangat perlu bagi memastikan kualiti buah nanas MD2 Malaysia setanding dengan nanas yang telah lama berada di pasaran Jerman.
2. Walaupun Jerman atau Negara di bawah Kesatuan Eropah merupakan rakan dagang tradisi Malaysia dan tiada sekatan laluan pasaran, namun jarak yang jauh yang melibatkan logistik melalui kapal laut mengambil masa lebih kurang sebulan boleh menyebabkan buah rosak, Jika tiada rawatan *post-harvest* yang betul.
3. Selain dari kualiti buah, kajian pasaran dari segi harga, citarasa penduduk tempatan dan keperluan persijilan dan dokumentasi perlu diperhalusi.
4. Pasaran Nanas ke Jerman di harapkan menjadi satu permulaan bagi pengeksporan komoditi pertanian yang lain dan di perluaskan ke negara-negara Eropah yang lain seperti Netherlands.

3. Kepentingan Kursus / Bengkel Kepada Pembangunan Individu :

1. Menambahkan pengetahuan berkaitan keperluan dan kepentingan dalam pelaksanaan '*Food Security*' di Negara Eropah seperti keperluan persijilan *Global GAP, Rainforest Alliance, BRCGS Food and Safety dan BRCGS Agent and Broker.*
2. Memberi kefahaman berkaitan prosedur pengeksporan dan laluan pasaran kepada golongan sasaran.
3. Meningkatkan jalinan kerjasama antara agensi kerajaan, syarikat swasta dan pegawai/ konsulat Malaysia di Eropah.
4. Membuka mata dan minda berkaitan taraf dan pembangunan teknologi dan kompetensi negara luar dalam perdagangan dan pengeluaran hasil pertanian

2.1 The Importance of Exporting Pineapples out of this country is very much necessary to ensure that the Malaysian MD2 pineapples is comparable to pineapples that have been in the German market.

2.2 While there are no market route restrictions for Germany or countries within the European Union, the extended shipping distance via sea transport, spanning about a month, poses a risk of fruit damage without appropriate POST-HARVEST TREATMENT.



DECCO

**ESSENTIAL
ENTITY :**

**EXTEND
FRUITS SHELF LIFE**

**PICASYNERGY
HOLDINGS (M) SDN BHD
- MALAYSIA'S SOLE
DISTRIBUTOR**

More. Beautiful. Fresh.

SMART CLEAN

DETERGENTE IGIENIZZANTE PER IL LAVAGGIO DELL'ORTOFRUTTA
DETERGENT AND SANITIZER FOR WASHING FRUITS AND VEGETABLES

SPECIFICATIONS

Packaging: 200 - 1000 kg

Formulation: Liquida / Liquid

Market: Convenzionale / Conventional

Composition: Sodio idrogeno carbonato e oli essenziali di grado alimentare /
Sodium hydrogen carbonate and food grade essential oils

Smart Clean ha un forte potere detergente in grado di supportare efficacemente la rimozione di residui, sporco e contaminanti. Il prodotto determina, sulla superficie dei frutti, un ambiente non idoneo allo sviluppo dei patogeni. Prolunga la shelf-life e la resistenza alla manipolazione dei frutti.

Smart Clean has a strong cleaning power that is able to effectively support the removal of residues, dirt and other contaminants. The product determines on the surface of the fruits, an environment unsuitable for the development of pathogens. It prolongs shelf-life and promotes resistance to damages brought about by handling of fruits.

BENEFICI

- Zero residui;
- Tutti ingredienti di grado alimentare;
- Prolunga la shelf-life;
- Alte performance bassi costi.

BENEFITS

- Zero residues;
- All food grade ingredients;
- Extend shelf-life;
- High performance low costs.



DOSE E MODALITÀ DI APPLICAZIONE

Ortofrutta: 2,5 - 3 g / kg di frutta

Applicazione: si applica per aspersione sulle linee di lavaggio / spazzolatura

DOSES AND METHOD OF APPLICATION

Fruit and vegetables: 2,5 - 3 g / kg di frutta

Application: applied by spray on washing / brushing lines

DECCO FLUDI

FUNGICIDA PER IL CONTROLLO DELLE MALATTIE POST-RACCOLTA
A FUNGICIDE FOR THE CONTROL OF POST-HARVEST DISEASES

SPECIFICATIONS

Packaging: 1 l

Formulation: 230 SC

Market: Convenzionale / Conventional (Product registered in South Africa n° L10435)

DECCO Fludi è un fungicida di contatto che mostra un'ampia attività significativa nei confronti di un ampio spettro di malattie fungine. Particolarmente efficace contro i generi *Botrytis*, *Fusarium*, *Magnaporthe*, *Aspergillus*, *Monilia* e *Penicillium*. **DECCO Fludi** inibisce la crescita del micelio riducendo la sporulazione.

DECCO Fludi is a contact fungicide showing a broad significant activity against a broad spectrum of fungal diseases. Particularly effective against the genera *Botrytis*, *Fusarium*, *Magnaporthe*, *Aspergillus*, *Monilia* and *Penicillium*. **DECCO Fludi** inhibits mycelium growth by reducing sporulation.

BENEFICI

- Inibisce lo sviluppo del micelio;
- Preserva la qualità della frutta;
- Prolunga la shelf-life;
- Effetto sinergico in combinazione con altri agrofarmaci;
- Controllo delle resistenze.

BENEFITS

- Inhibits the mycelium development;
- Keep the quality of the crops;
- Extends shelf-life;
- Synergistic effect in combination with other crop protection products;
- Control of resistances.



COMPOSIZIONE

DECCO Fludi 230 g / l

DOSE CONSIGLIATE
7 cc / ton ovvero 140 ton di frutta per 1 l di DECCO Fludi

COMPOSITION

DECCO Fludi 230 g / l

DOSAGE
7 cc / ton or 140 tons of fruits per 1 l of DECCO Fludi

DECCO Lustr

LA PROTEZIONE NATURALE PER I TUOI ANANAS
THE NATURAL PROTECTION OF PINEAPPLES

SPECIFICATIONS

Packaging: 200 kg

Formulation: Emulsione / Emulsion

Market: In base alla formulazione / According to the formulation

Crop: Ananas / Pineapples

L'esperienza di DECCO ha creato la linea **DECCO Lustr** specifica per il trattamento dell'ananas, in grado di migliorare la qualità e prolungare la shelf-life. Le nostre formulazioni creano un film altamente stabile e totalmente trasparente sul frutto che riducono l'IBS, controllano la disidratazione, riducono la perdita di peso e il cambiamento di colore della buccia.

DECCO's experience has created the specific **DECCO Lustr** line for pineapples. With the aim of improving quality and extending shelf-life. With the aim of improving quality and extending shelf-life, our formulations create a highly stable film on the fruit that reduce IBS, control dehydration, reduce weight loss and skin colour change.

BENEFICI

- Riduce il cambiamento di colore della buccia;
- Controlla l'IBS (sindrome dell'imbrunimento interno);
- Formulazioni autorizzate in EU, FDA e Giappone;
- Estende la shelf-life.

BENEFITS

- Reduce shell color change;
- Control IBS (internal browning syndrome);
- Formulation comply to EU, FDA and Japan regulations;
- Extend shelf-life.



DECCO lustr 444

Active ingredient:
(E905) Microcristallina wax. Specialty formulated for prevention of IBS.

DECCO lustr 445 NEW

Active ingredient:
(E905) Microcristallina wax and food grade oils. Its formulation was made to have extra action in controlling weight loss and delay ripening.

DECCO lustr 446

Active ingredient:
(E473) Sucrose esters of fatty acids.

DECCO SOL 100

DETERGENTE PER LA FRUTTA
FRUIT CLEANER

SPECIFICATIONS

Packaging: 22 - 100 kg

Formulation: Liquida / Liquid

Market: Convenzionale / Conventional

Active ingredient: Tensioattivi biodegradabili oltre il 90% e idrato di ammonio inferiore al 2% /
Surfactants biodegradable over 90% and ammonium hydrate below 2%

DECCO SOL 100 è una formulazione specifica per la pulizia della frutta. Il formulato non interferisce con la struttura della cera naturale del frutto. Biodegradabile per oltre il 90%. Il prodotto è particolarmente indicato per la rimozione delle fumagginie.

DECCO SOL 100 is a specific prescription for cleaning some fruit. The formulation does not interfere with the structure of the natural wax of the fruit. Biodegradable for over 90%. The product is particularly indicated for the removal of sooty mold.

BENEFICI

- Biodegradabile per oltre il 90%;
- Rimuove la fumaggine;
- Detergente ad alte performance;
- Bassi costi.

BENEFITS

- Biodegradable for over 90%;
- Remove sooty mold;
- High performance cleaner;
- Low costs.



DOSE E MODALITÀ DI APPLICAZIONE

Ortofrutta: 100 kg di DECCO SOL 100 per il lavaggio di circa 600 tonnellate di frutta. Il prodotto può essere applicato in una vasca o mediante ugelli alimentati da una pompa dosatrice con l'azione combinata di una spazzolatrice. Indipendentemente dal metodo usato, DECCO SOL 100 deve essere diluito con acqua in un rapporto di 1:100.

DOSES AND METHOD OF APPLICATION

Fruit and vegetables: 100 kg of DECCO SOL 100 are recommended for washing about 600 t of fruit. The product can be applied in a tank or by means of nozzles fed by a metering pump with the combined action of a brushing machine. Regardless of the method used, DECCO SOL 100 must be diluted with water in a ratio of 1:100.

- Extend Shelf life
- Zero Residue
- Safe & Quality

AGROLAB LUFA Dr.-Hell-Str. 6, 24107 Kiel
Picasynergy Holdings (M) Sdn. Bhd.
18-02 Jalan Padi Emas 4/1
81200 Johor Bahru
MALAYSIA

Date 13.09.2022
Customer no. 10089965

REPORT

Order 3138068
Sample no. 623484
Sample acceptance 09.09.2022
Customer sample description Frozen Pineapple
Packaging 2x plastic bag

Unit Result Declaration Substance Method

Pesticides Multi-Residue-Methods (complete list see appendix)
In the range of performed analysis no pesticides were detected above limit of quantification.

Pesticides by single methods

Ethephon	mg/kg	<0,010	OM	MP-00225-DE : 2022-06 (LC-MS/MS)
----------	-------	--------	----	----------------------------------

x) Single values below the quantification limit or the detection limit were not taken into account.
Explanation: The symbol "<" or n.d. in the result column means, the substance concerned is not quantifiable at the limit of quantification shown opposite.
The sign "<..."(LOD)" or n.d. in column result means, the substance concerned cannot be detected within the limit of detection. Parameter-specific analytical measurement uncertainties and information regarding the method of calculation will be provided upon request if the reported results are above the parameter-specific limit of quantification.

Explanation: OM = on original matter, DM = on dry matter base
Start of testing: 09.09.2022
End of testing: 13.09.2022

The results are related only to the samples tested. In cases where the laboratory has not been responsible for sampling, the reported results apply to the samples as received. Duplication of this document or of parts of it requires the authorization from laboratory. In accordance our agreement in writing in the order confirmation, the results in this test report are in a simplified form in the context of DIN EN ISO/IEC 17025:2018, paragraph 7.6.1.3.



AGROLAB LUFA Frau Annika Luderer, Tel. 0431/1228-255
officially approved foodchemist
customer relation management

The sign < (LOD) or nd. in column result means, the substance concerned cannot be detected within the limit of detection.

Tanda < (LOD) atau nd. dalam kolumn hasil bermakna, bahan berkenaan tidak dapat dikesan dalam had pengesanan.

Pesticides Multi-Residue-Methods (complete list see appendix)
In the range of performed analysis no pesticides were detected above limit of quantification.

Pesticides by single methods

Ethephon	mg/kg	<0,010	OM	MP-00225-DE : 2022-06 (LC-MS/MS)
----------	-------	--------	----	----------------------------------

x) Single values below the quantification limit or the detection limit were not taken into account.
Explanation: The symbol "<" or n.d. in the result column means, the substance concerned is not quantifiable at the limit of quantification shown opposite.
The sign "<..."(LOD)" or n.d. in column result means, the substance concerned cannot be detected within the limit of detection. Parameter-specific analytical measurement uncertainties and information regarding the method of calculation will be provided upon request if the reported results are above the parameter-specific limit of quantification.

The activities reported in this document are accredited according to DIN EN ISO/IEC 17025:2018. Only not accredited activities are identified by the symbol "†".

DIN EN ISO/IEC 17025:2018. Only not accredited

PARTNERS



CERTIFICATIONS



GLOBALG.A.P.

BRCS

Food Safety

CERTIFICATED





*Thank
You*



PICASYNERGY

PICASYNERGY HOLDINGS (M) SDN BHD

L2-19, Level 2, Shaftsbury Putrajaya

Jalan Alamanda, Presint 1

62000 Putrajaya

W.P. Putrajaya

MALAYSIA

lynda.e@picasynergy.com